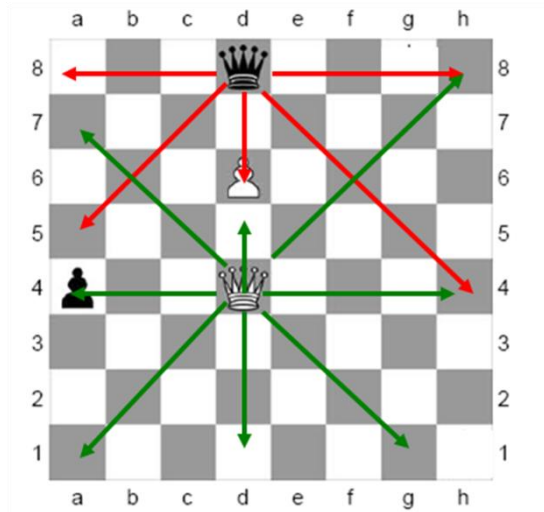


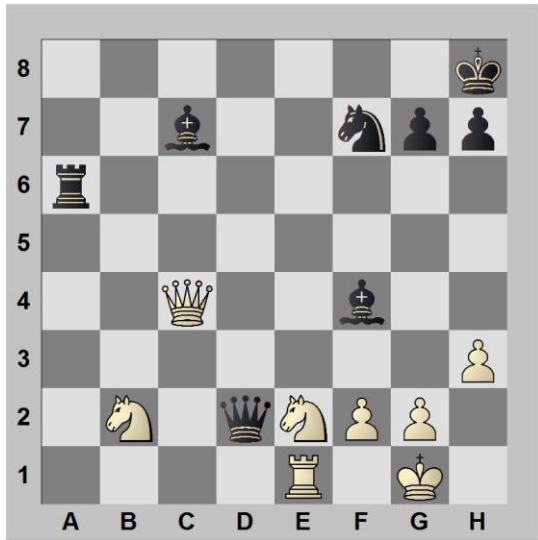
Module 1 Task 4 Show how Queens move and capture

The Queen is the most powerful of all chess pieces. It moves forwards, backwards, sideways, or diagonally. So it make the moves of a rook and bishop together. Queens are valued at nine points.



- Can the white queen (Q) move to either a1 or h8?
- Can the white queen (Q) take the black pawn on a4?
- Can the white queen (Q) move to d6?
- Can the black queen (Q) move to both a8 and h8?
- Can the black queen (Q) move to h5?
- Can the black queen (Q) take the white queen?

Can the white queen (Q) move to either a1 or h8? **YES to both**
Can the white queen (Q) take the black pawn on a4? **YES**
Can the white queen (Q) move to d6? **NO as that square is occupied by own pawn**
Can the black queen (Q) move to both a8 and h8? **YES**
Can the black queen (Q) move to h5? **YES**
Can the black queen (Q) take the white queen? **NO, there is a white pawn in the way and Queens cannot jump other pieces or pawns**



Place the pieces show in the diagram on the chess board

Questions for White

- Is the white Queen attacking the black queen?
- How many pieces is the white Queen attacking?
- How many squares can the white Queen move to?

Questions for Black

- How many pieces is the black Queen attacking?
- How many squares can the black Queen move to?
- One move by the black Queen gives checkmate! What is that move?

Answers for White
 Is the white Queen attacking the black queen? **NO**
 How many pieces is the white Queen attacking? **3, the bishop, the rook and the knight**
 How many squares can the white Queen move to? **21**

Answers for Black
 How many pieces is the black Queen attacking? **3, both knights and the rook**
 How many squares can the black Queen move to? **19**
 One move by the black Queen gives checkmate! What is that move? **QxR (at square e1)**