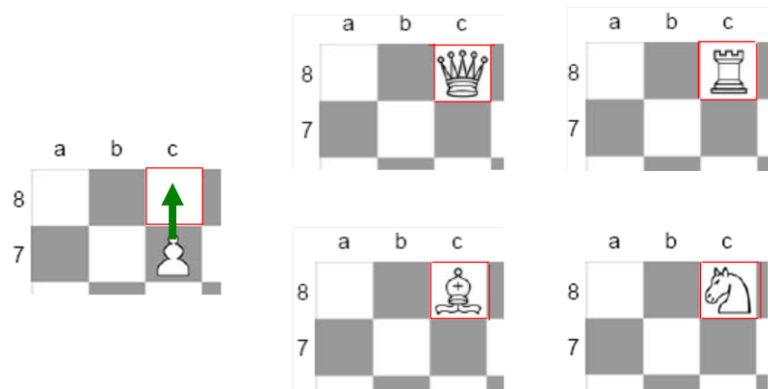


Module Task *Explain what happens when a pawn reaches the far end of the board*

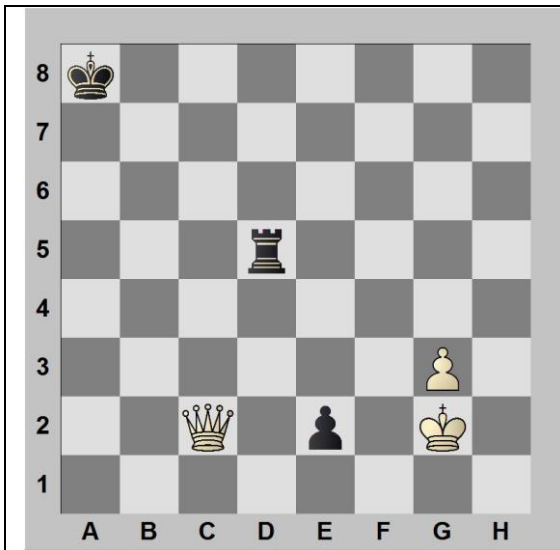
If a **PAWN** reaches the last rank, then it is removed from the board and replaced by any other piece apart from a King. The new piece is placed on the same square that the pawn occupied just before being removed from the board. The chess term for this is '**promotion**'. You can promote the pawn to a Q, R, B or N. After promotion you can have more than one Q or more than 2 of either R, N or B on the board at the same time.



Most of the time the promotion is to a Queen but occasionally other pieces might be better (see problems on next page). Pawns can take an enemy piece on the back rank when they promote. If the promotion square (c8 in the example above) is attacked by an enemy piece then this can then take your new piece.

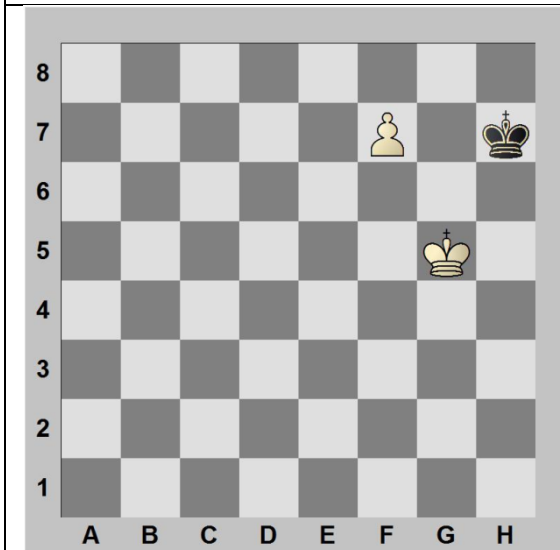
	<p>Here White can play either 1 Pf8=Q+ (pawn moves forward one square, is converted to a Queen with a check) but then Black takes the new Queen with the Bishop at b4</p> <p>A better move for White is 1. Pxf8+ (so the pawn takes the Knight and is converted to a Queen with check and is safe from capture.</p>
--	--

Pawn promotion exercises. Set up these positions on the chess board and answer the Questions



Problem 1

- (a) Here it Black to play what is the best move?
- (b) If it were White's move what would you play?



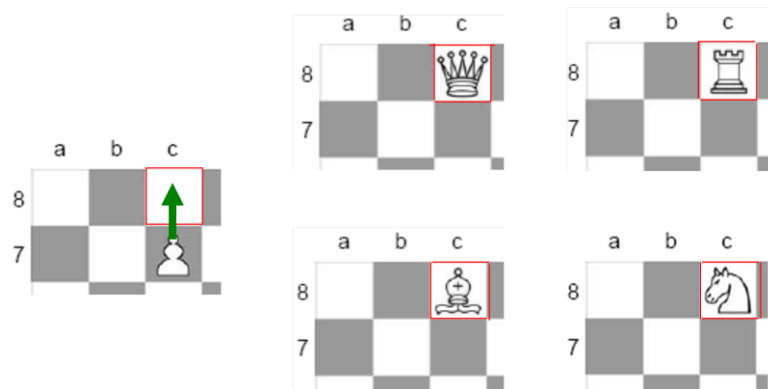
Problem 2

- (a) Your move as White what is the best move? (there are two good choices!)
- (b) What would be a bad move for White?
- (c) If it was Black's move what is best?

Problem 1
 (a) Here it Black to play what is the best move? $Pc1=N+$ (forks kings and Queen) the Black K. N and R will easily win against the White King and pawn
 (b) If it were White's move what would you play? $Qx2$ (then Queen is free to attack the black Rook and King
Problem 2
 (a) Your move as White what is the best move? (there are two good choices!) **Option 1** $Pf8=R$, **Option 2** $Kf6$, followed by $Pf8=Q+$
 (b) What would be a bad move for White? $Pf8=Q$ and the position is a stalemate as any move by the black king would be into check. So the game is drawn (half point each)
 (c) If it was Black's move what is best? $Kg7$ as this will win the pawn (even if it promotes) and game is drawn

Module Task *Explain what happens when a pawn reaches the far end of the board*

If a **PAWN** reaches the last rank, then it is removed from the board and replaced by any other piece apart from a King. The new piece is placed on the same square that the pawn occupied just before being removed from the board. The chess term for this is '**promotion**'. You can promote the pawn to a Q, R, B or N. After promotion you can have more than one Q or more than 2 of either R, N or B on the board at the same time.



Most of the time the promotion is to a Queen but occasionally other pieces might be better (see problems on next page). Pawns can take an enemy piece on the back rank when they promote. If the promotion square (c8 in the example above) is attacked by an enemy piece then this can then take your new piece.

	<p>Here White can play either 1 Pf8=Q+ (pawn moves forward one square, is converted to a Queen with a check) but then Black takes the new Queen with the Bishop at b4</p> <p>A better move for White is 1. Pxf8+ (so the pawn takes the Knight and is converted to a Queen with check and is safe from capture.</p>
--	--

Pawn promotion exercises. Set up these positions on the chess board and answer the Questions

	<p>Problem 1</p> <p>(a) Here it Black to play what is the best move?</p> <p>(b) If it were White's move what would you play?</p>
	<p>Problem 2</p> <p>(a) Your move as White what is the best move? (there are two good choices!)</p> <p>(b) What would be a bad move for White?</p> <p>(c) If it was Black's move what is best?</p>

<p>Problem 1</p> <p>(a) Here it Black to play what is the best move? $Pc1=N+$ (forks kings and Queen) the Black K. N and R will easily win against the White king and pawn</p> <p>(b) If it were White's move what would you play? $Qxe2$ (then Queen is free to attack the black Rook and King</p> <p>Problem 2</p> <p>(a) Your move as White what is the best move? (there are two good choices!) Option 1 $Pf8=R$, Option 2 $Kf6$, followed by $Pf8=Q+$</p> <p>(b) What would be a bad move for White? $Pf8=Q$ and the position is a stalemate as any move by the black king would be into check. So the game is drawn (half point each)</p> <p>(c) If it was Black's move what is best? $Kg7$ as this will win the pawn (even if it promotes) and game is drawn</p>
--