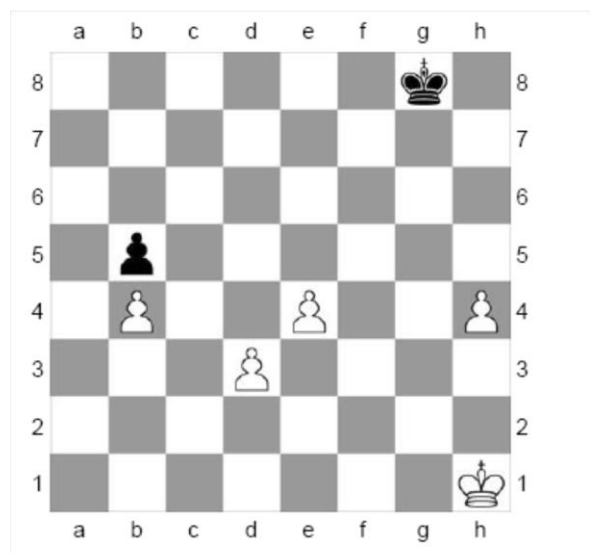
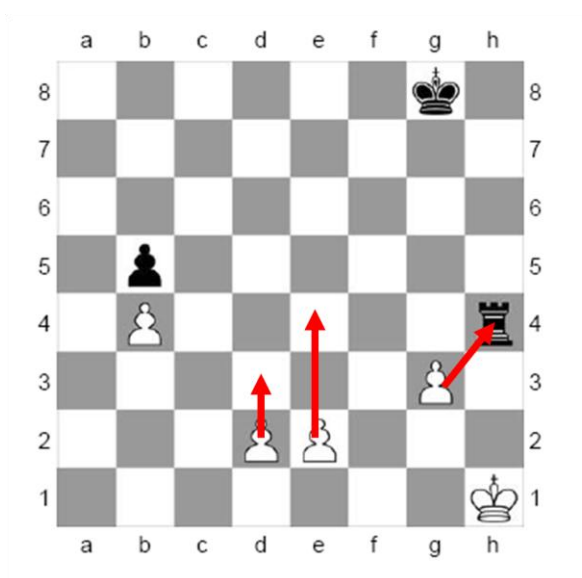


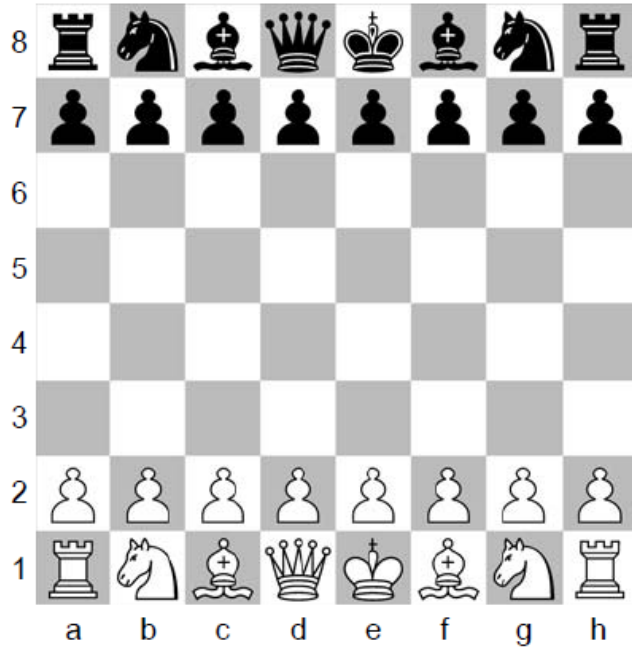
MODULE 1

Task 1 Show how pawns move and capture

- Pawns move forward only, never backwards or sideways
- Pawns move only one square on each turn, except for the first move of *each* pawn, when it can be moved one square or two squares forward
- A Pawn cannot advance if the square directly in front of it is occupied by another piece
- Pawns capture diagonally forward. When chess pieces make a capture, the piece being captured is removed from the chess board and replaced by the piece making the capture
- Pawns are weak, slow, and valued at only one point, but pawns become more powerful as they advance up the board.

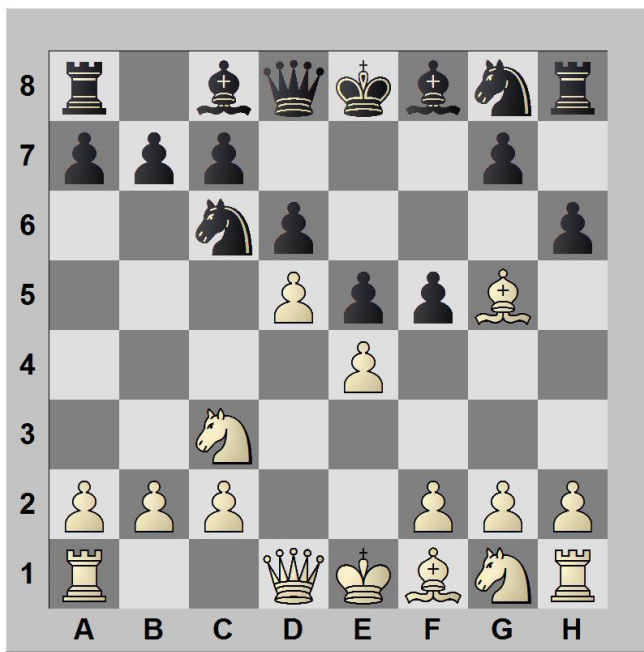


- The diagram on the left hand side show all the possible moves each of the white pawns can make (the red arrows). Note that the pawn on square b4 cannot move as it is blocked.
- The diagram on the right shows where the pawns would be if they moved as shown by the arrows (remember this would take 3 moves!).



A. This is the starting position for a game of chess.

- For the first move how many possible pawn moves could the White player make?
- How many could Black make in reply?



B. Here is a position from early in a game

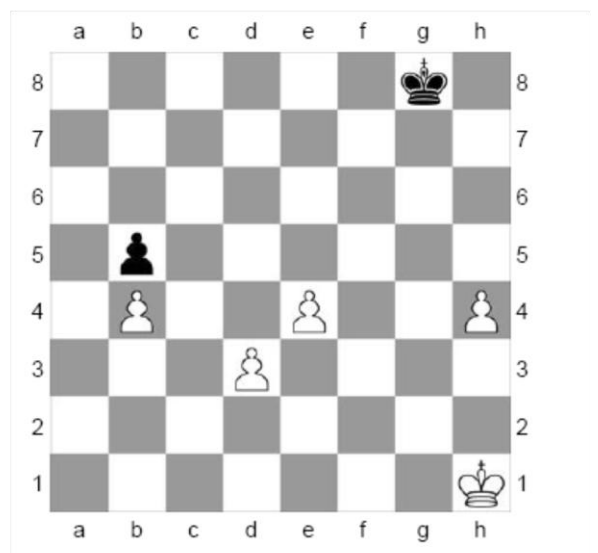
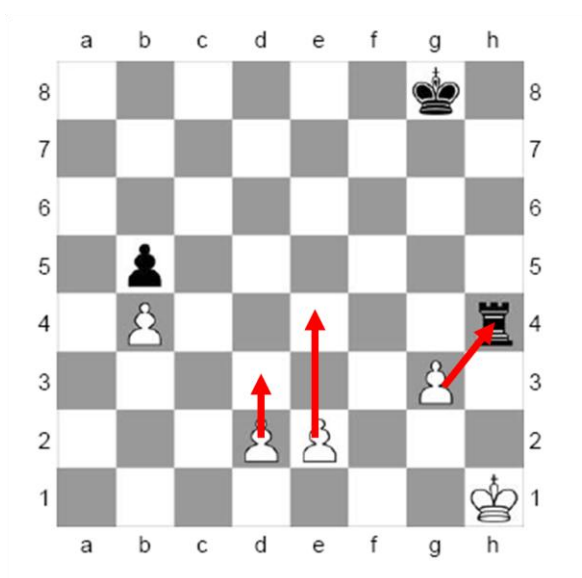
- If it were white's move how many captures can be made by pawns?
- If it were black's move how many captures can be made by pawns?
- How many moves in total can White make with pawns?
- How many moves in total can Black make with pawns?

Answer A
 • White can make a possible 16 moves because each pawn can move forward either 1 or 2 moves.
Answer B
 • White can take the Knight(N) at c6 or the pawn at square f5
 • Black can take the bishop(B) at g5 or the pawn at e4
 • White can make 12 possible pawn moves
 • Black can make 9 possible pawn moves
 • (remember in chess you do not have to 'take' – that is your choice)

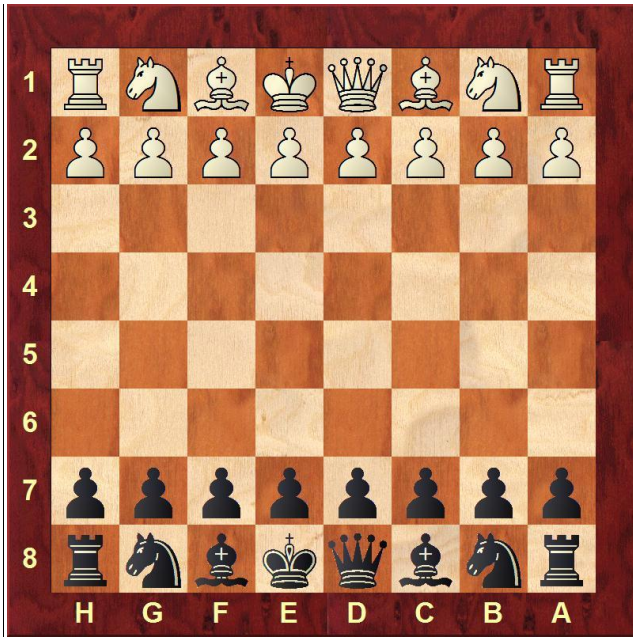
MODULE 1

Task 1 Show how pawns move and capture

- Pawns move forward only, never backwards or sideways
- Pawns move only one square on each turn, except for the first move of *each* pawn, when it can be moved one square or two squares forward
- A Pawn cannot advance if the square directly in front of it is occupied by another piece
- Pawns capture diagonally forward. When chess pieces make a capture, the piece being captured is removed from the chess board and replaced by the piece making the capture
- Pawns are weak, slow, and valued at only one point, but pawns become more powerful as they advance up the board.



- The diagram on the left hand side show all the possible moves each of the white pawns can make (the red arrows). Note that the pawn on square b4 cannot move as it is blocked.
- The diagram on the right shows where the pawns would be if they moved as shown by the arrows (remember this would take 3 moves!).



A. This is the starting position for a game of chess.

- For the first move how many possible pawn moves could the White player make?
- How many could Black make in reply?



B. Here is a position from early in a game

- If it were white's move how many captures can be made by pawns?
- If it were black's move how many captures can be made by pawns?
- How many moves in total can White make with pawns?
- How many moves in total can Black make with pawns?

- Answer A**
- White can make a possible 16 moves because each pawn can move forward either 1 or 2 moves.
 - Black can also make 16 possible moves.
- Answer B**
- White can take the Knight(N) at c6 or the pawn at square f5
 - Black can take the bishop(B) at g5 or the pawn at e4
 - White can make 12 possible pawn moves
 - Black can make 9 possible pawn moves
- (remember in chess you do not have to 'take' – that is your choice)