

Discovered Attacks

Discovered attack

Last month we looked at discovered checks. The theme is continued this month but with discovered attack moves that do not involve a check. So same idea, move one piece and reveal an attack on one of the enemy pieces by another of your pieces. The discovered attack is often stronger if the piece that moves attacks another enemy piece

Look at position (a).

White to make a move that simultaneously attacks both the black queen and knight (but different white pieces are doing the attacking!).

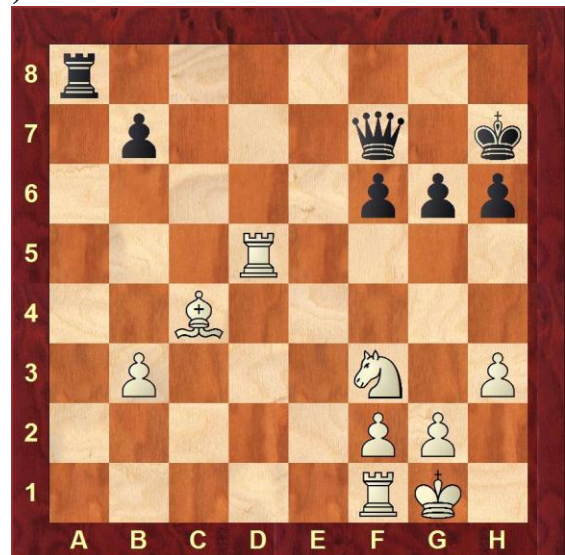
(b)

Now a move by white that attacks both the black queen and rook (again the attacks are by different white pieces)

(a)



(b)



c)

Again white to play a move that leads to both the black rook and bishop being attacked. What is your move?

(c)



(d)

Now the white bishop and rook work together to win the black bishop. What is the correct move by White?

(d)

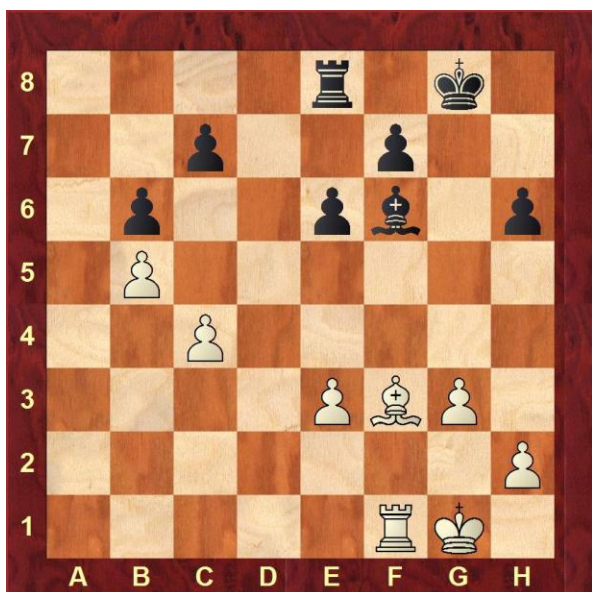


See all answers [HERE](#)

The Novice and Intermediate problems below continue the theme of discovered attacks. How many can you solve?

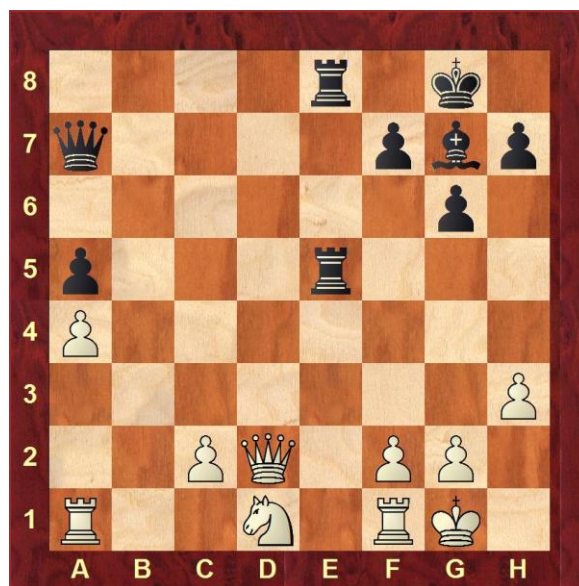
This month's problems - Novice

Problem N43



- N43. a) The best move for White is?
b) if it were Black's move what would you play?

Problem N44



- N44. a) How does Black win a piece?
b) if it were White's move what would you play?

This month's problems - Intermediate

Problem I43



- I43. a) The best move for Black is?

Problem I44



- I44. a) The best move for White is?

b) if it were White's move what would you play?

b) if it were Black's move what would you play?

Solution to last month's problems - Novice

Problem N41



N41 (a). White to play and win Black's queen - how?

(b) If it were Black's move what would you do?

Answer:

(a) White plays

1. Bg5+ bishop moves to attack the queen while the rook gives discovered check

(b) a good move for Black is

1 O-O castles and removes the threat of discovered check

Problem N42



N42. What should White play now?

Answer:

(a) White plays

1. Rg5+ the rook moves to attack the queen and reveals a discovered check by the bishop on f6

Solution to last month's problems - Intermediate

Problem I41

Problem I42



141. What is the best move for White here and why?

Answer:

(a) White plays

1. Bxc6# this is a special double check - the piece that moves (bishop) gives check and reveal the attack by the white queen. With double check the king has to move but all the squares are covered so it is checkmate.



141. Gary Kasparov was White here - can you find the combination of moves that the then world champion played to force a mating attack?

Answer:

(a) White plays

1. Qxc6+ Kxc6 (else the B is lost)
 2. Ne5+ Kc5
 3. Nc3+ Kd4
 4. Kd2 any move
 5. c3# so a queen sacrifice, a discovered check and then a clever king move with mate by a pawn - very nice

Answers to Discovered Attack Problems (return to Problems [HERE](#))

(a) White simply plays

1. Nf6

The white knight attacks the black queen, but by moving the white queen has a discovered attack on the black knight. Can you see that the black queen cannot move to a square that will defend the black knight?

(b) The White move is:

1. Rd8

This move attacks the black rook which could take the white rook but then the white bishop will remove the

(c) Did you find

1. Nf3 leading to a discovered attack on the black bishop by the white rook while the white knight attacks the black rook

(d) The correct answer is

1. Bc5.

Any other bishop move will allow Black to play Rd5 and protect the black bishop on a5. Note that the black bishop cannot move as it would put Black in check.

**black queen! Again can you see that
the queen (which needs to move)
cannot defend the black rook.**