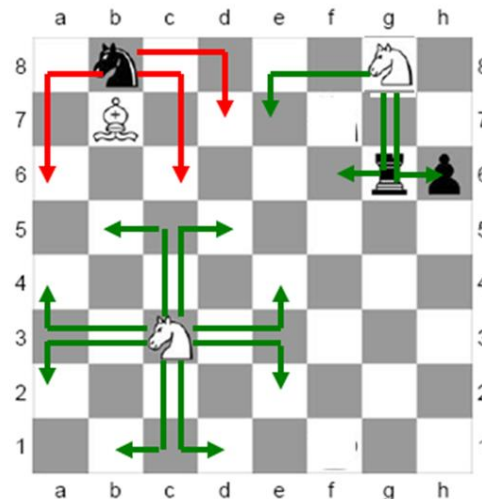


Module 1 Task 5 Show how Knights move and capture

Knights move two squares only, in any direction, and must finish on a square opposite in colour to the one from which they started. Knights cannot move in a straight line direction, or in any diagonal direction.

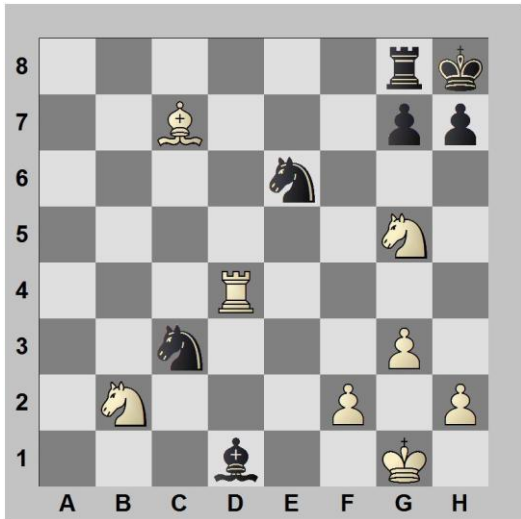
The Knight is the only chessman that can jump over other pieces, but it may not capture the pieces it jumps over, only pieces on the square that it lands on can be captured

Knights are valued at three points.



- To how many squares can the white knight (N) on c3 move to?
- Can any of the moves for either white N take a black piece?
- What is odd about the colour of the start and finish squares for all the knights?
- Can the black knight take the white bishop?
- Can the first move of a chess game be by a knight?

To how many squares can the white knight (N) on c3 move to? 8
 Can any of the moves for either white N take a black piece? NO, the knights on take pieces that occupy the destination square
 What is odd about the colour of the start and finish squares for all the knights? The colour changes – so if starts on a white square it will land on a black square and next time it moves it goes back onto a white square.
 Can the black knight take the white bishop? No, as it will not land on that square
 Can the first move of a chess game be by a knight? YES, as knights are the only piece that can jump over others it can hop over the pawns. Each can land on one of two squares as the first move.



Set up a chess board exactly the same as in the diagram

Questions for white

- The white knight at b2 is attacking one black piece - was is it?
- How many squares is the white knight at b2 attacking?
- How many pieces is the white knight at g5 attacking?
- How many squares can the white knight at g5 move to?
- One move by a white knight gives checkmate - what is it?

Questions for Black

- How many pieces is the black knight at e6 attacking?
- Is the black knight at c3 attacking any white pieces?
- How many squares can the black knight at c3 move to?
- Are any of the moves a check?

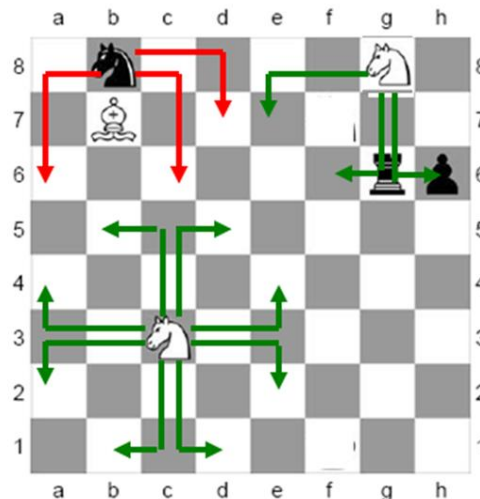
Answers for white
 The white knight at b2 is attacking one black piece - was is it? **The black bishop at d7**
 How many squares is the white knight at b2 attacking? **4**
 How many pieces is the white knight at g5 attacking? **Just one, the knight**
 How many squares can the white knight at g5 move to? **6**
 One move by a white knight gives checkmate - was is it? **Nf7 checkmate! The king is in check, cannot move nor can black take the knight**
Answers for Black
 How many pieces is the black knight at e6 attacking? **3, a bishop, rook and knight**
 Is the black knight at c3 attacking any white pieces? **NO**
 How many squares can the black knight at c3 move to? **7**
 Are any of the moves a check? **YES, if the knight goes to e2.**

Module 1 Task 5 Show how Knights move and capture

Knights move two squares only, in any direction, and must finish on a square opposite in colour to the one from which they started. Knights cannot move in a straight line direction, or in any diagonal direction.

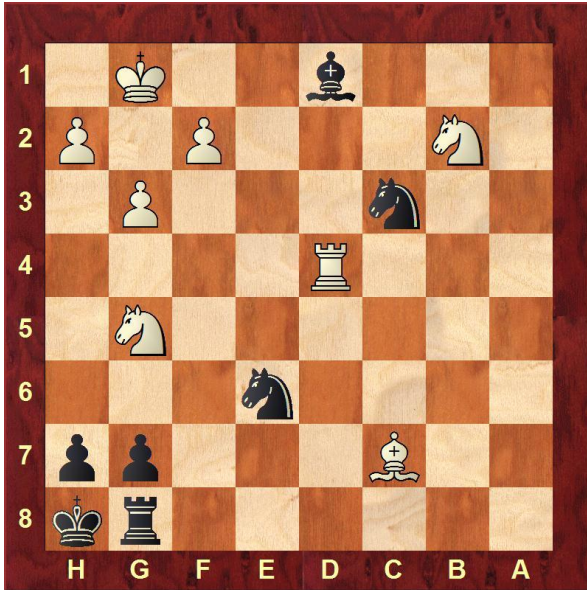
The Knight is the only chessman that can jump over other pieces, but it may not capture the pieces it jumps over, only pieces on the square that it lands on can be captured

Knights are valued at three points.



- To how many squares can the white knight (N) on c3 move to?
- Can any of the moves for either white N take a black piece?
- What is odd about the colour of the start and finish squares for all the knights?
- Can the black knight take the white bishop?
- Can the first move of a chess game be by a knight?

To how many squares can the white knight (N) on c3 move to? **8**
 Can any of the moves for either white N take a black piece? **NO, the knights on take pieces that occupy the destination square**
 What is odd about the colour of the start and finish squares for all the knights? **The colour changes – so if starts on a white square it will land on a black square and next time it moves it goes back onto a white square.**
 Can the black knight take the white bishop? **No, as it will not land on that square**
 Can the first move of a chess game be by a knight? **YES, as knights are the only piece that can jump over others it can hop over the pawns. Each can land on one of two squares as the first move.**



Set up a chess board exactly the same as in the diagram

Questions for white

- The white knight at b2 is attacking one black piece - was is it?
- How many squares is the white knight at b2 attacking?
- How many pieces is the white knight at g5 attacking?
- How many squares can the white knight at g5 move to?
- One move by a white knight gives checkmate - what is it?

Questions for Black

- How many pieces is the black knight at e6 attacking?
- Is the black knight at c3 attacking any white pieces?
- How many squares can the black knight at c3 move to?
- Are any of the moves a check?

Answers for white

The white knight at b2 is attacking one black piece - was is it? **The black bishop at d1**
 How many squares is the white knight at b2 attacking? **4**
 How many pieces is the white knight at g5 attacking? **Just one, the knight**
 How many squares can the white knight at g5 move to? **6**
 One move by a white knight gives checkmate - was is it? **Nf7 checkmate! The king is in check, cannot move nor can black take the knight**

Answers for Black

How many pieces is the black knight at e6 attacking? **3, a bishop, rook and knight**
 Is the black knight at c3 attacking any white pieces? **NO**
 How many squares can the black knight at c3 move to? **7**
 Are any of the moves a check? **YES, if the knight goes to e2.**