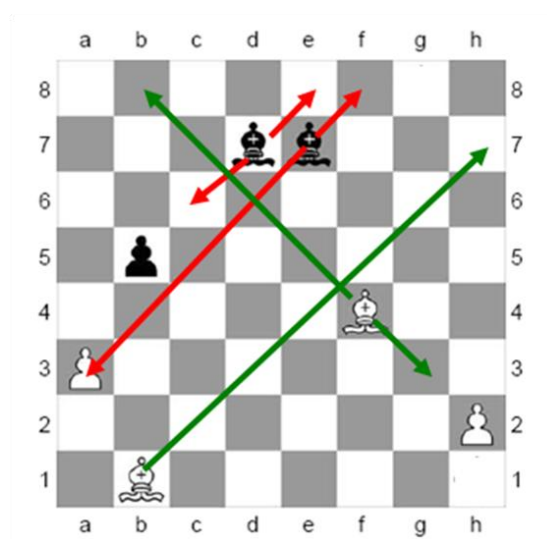


Module 1 Task 2 Show how Bishops move and capture

Bishops move diagonally, forwards or backwards. They move across any amount of empty squares, or as far as the first square occupied by an enemy piece (i.e. when they may make a capture) but, like all chess pieces, must stop one square short of any square being occupied by a friendly piece. Bishops are valued at three points.



Note that the bishop will always stay on its starting colour. So these are called either a white-square or a black-square bishop. Both sides start the game with one of each.

- Can the white bishop (B) on square b1 go to square h7?
- Can the white bishop on f4 go to h7?
- Can the black bishop on d7 go to e8
- Can the black bishop on d7 go to b5?
- Can the black bishop on d7 go to a4?
- Can the black bishop on e7 go to a3?
- Can the white bishop on f4 go to c7?
- Can the white bishop on f4 go to h2?

Can the white bishop (B) on square b1 go to square h7? YES

Can the white bishop on f4 go to h7? NO wrong colour square

Can the black bishop on d7 go to e8? YES

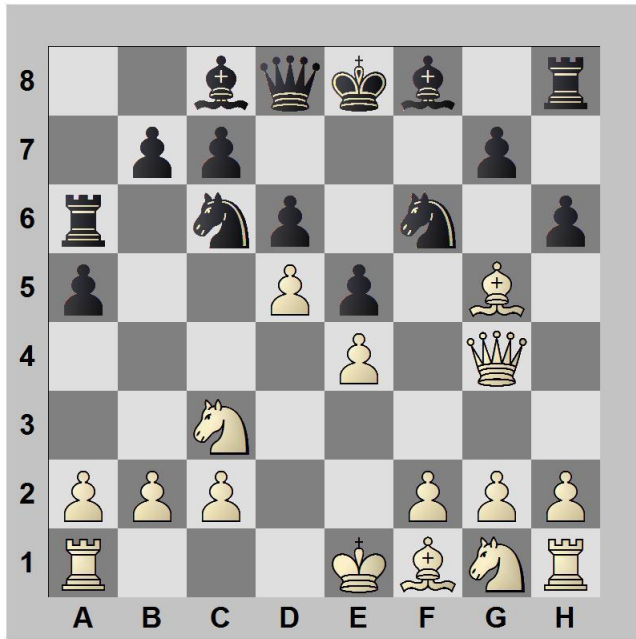
Can the black bishop on d7 go to b5? NO that square is occupied by own pawn

Can the black bishop on d7 go to a4? NO bishops cannot jump over pieces or pawns

Can the black bishop on e7 go to a3? YES and capture the white pawn that occupies that square

Can the white bishop on f4 go to c7? YES

Can the white bishop on f4 go to h2? NO as that square is occupied by white's own pawn



• At the very start of a game of chess can a bishop make the first move?
 Look at the diagram on the left and set it up on your chess board.

Questions for White

- Can the white-square bishop (on square f1) take any of black's pieces?
- What black men (pieces or pawns) can your black-square B on g5 take?

Questions for Black

- What white piece is your bishop on the white squares (look at c8) attacking?
- How many squares can your black-square bishop move to?
- Can you take either of white's bishops next move?

At the very start of a game of chess can a bishop make the first move? **NO** all the bishops are

blocked in by pawns

Questions for White

Can the white-square bishop (on square f1) take any of black's pieces? **YES** the rook @ at a3

What black men (pieces or pawns) can your black-square B on g5 take? **2**, the knight(N) at f6 or the

pawn (P) at h6

Questions for Black

What white piece is your bishop on the white squares (look at c8) attacking? **The queen (Q) at g4**

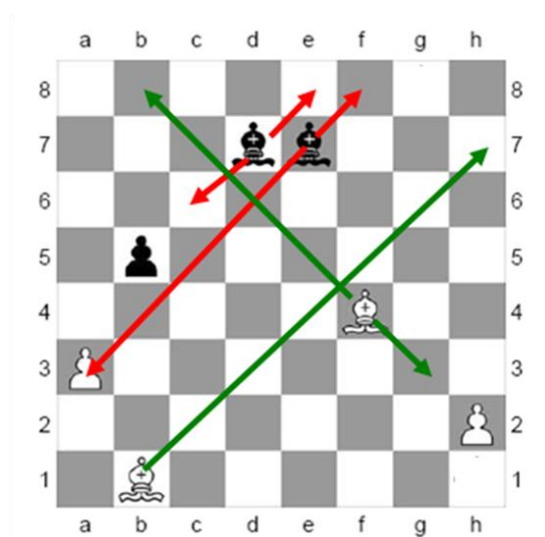
How many squares can your black-square bishop move to? **Just one, the square (e7) in front of your**

king (K)

Can you take either of white's bishops next move? **YES**, the pawn at h6 can take the bishop at g5

Module 1 Task 2 Show how Bishops move and capture

Bishops move diagonally, forwards or backwards. They move across any amount of empty squares, or as far as the first square occupied by an enemy piece (i.e. when they may make a capture) but, like all chess pieces, must stop one square short of any square being occupied by a friendly piece. Bishops are valued at three points.



Note that the bishop will always stay on its starting colour. So these are called either a white-square or a black-square bishop. Both sides start the game with one of each.

- Can the white bishop (B) on square b1 go to square h7?
- Can the white bishop on f4 go to h7?
- Can the black bishop on d7 go to e8
- Can the black bishop on d7 go to b5?
- Can the black bishop on d7 go to a4?
- Can the black bishop on e7 go to a3?
- Can the white bishop on f4 go to c7?
- Can the white bishop on f4 go to h2?

• Can the white bishop (B) on square b1 go to square h7? YES

• Can the white bishop on f4 go to h7? NO wrong colour square

• Can the black bishop on d7 go to e8? YES

• Can the black bishop on d7 go to b5? NO that square is occupied by own pawn

• Can the black bishop on d7 go to a4? NO bishops cannot jump over pieces or pawns

• Can the black bishop on e7 go to a3? YES and capture the white pawn that occupies that square

• Can the white bishop on f4 go to c7? YES

• Can the white bishop on f4 go to h2? NO as that square is occupied by white's own pawn



• At the very start of a game of chess can a bishop make the first move?
 Look at the diagram on the left and set it up on your chess board.

Questions for White

- Can the white-square bishop (on square f1) take any of black's pieces?
- What black men (pieces or pawns) can your black-square B on g5 take?

Questions for Black

- What white piece is your bishop on the white squares (look at c8) attacking?
- How many squares can your black-square bishop move to?
- Can you take either of white's bishops next move?

At the very start of a game of chess can a bishop make the first move? **NO** all the bishops are blocked in by pawns

Questions for White

Can the white-square bishop (on square f1) take any of black's pieces? **YES** the rook @ a3

What black men (pieces or pawns) can your black-square B on g5 take? **2**, the knight(N) at f6 or the pawn (P) at h6

Questions for Black

What white piece is your bishop on the white squares (look at c8) attacking? **The queen (Q) at g4**

How many squares can your black-square bishop move to? **Just one, the square (e7) in front of your king (k)**

Can you take either of white's bishops next move? **YES**, the pawn at h6 can take the bishop at g5